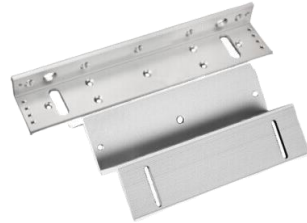


DS-K4H450-LZ

Pro Series Magnetic Lock Bracket



- Bracket for K4H450.

▪ Specification

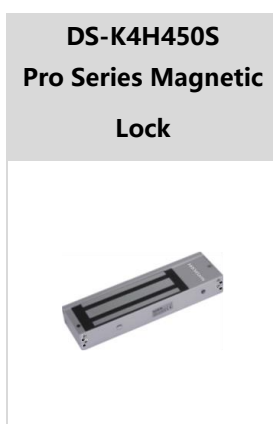
General	
Dimensions	L-bracket Dimension: 265 mm × 72 mm × 45.2 mm (10.43" × 2.83" × 1.78") Z-bracket Dimension: 185 mm × 70 mm × 61 mm (7.28" × 2.76" × 2.40") Z-bracket Dimension: 185 mm × 70 mm × 61 mm (7.28" × 2.76" × 2.40")
Weight	1.3 kg (2.9 lb)
Material	Shell: Anodized aluminum Lock Body: High Strength Aluminum with the Surface Sandblast
Door type	Wooden Door, Metal Door, Narrow Trim Door
Bracket of Magnetic Lock	
Suitable Door	Wooden Door, Metal Door, Narrow Trim Door

▪ Available Model

DS-K4H450-LZ

▪ Accessory

▪ Optional



Headquarters

No.555 Qianmo Road, Binjiang District,
Hangzhou 310051, China
T +86-571-8807-5998
www.hikvision.com



Follow us on social media to get the latest product and solution information.



Hikvision



HikvisionHQ



HikvisionHQ



Hikvision_Global



Hikvision
Corporate Channel



hikvisionhq