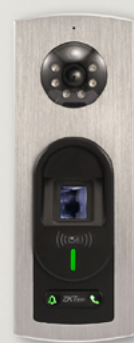


Notus

A Smart Video Intercom Door Station with Fingerprint and Dual-Frequency RFID Card Readers

Compatible with **ZKBio Access**



Notus is an RFID and Fingerprint access control terminal with a built-in web server. Additionally, Notus serves as a component in the Video Intercom system. It has an HD camera (2MP/1080p) on it, and a built-in microphone and speaker for two-way audio and one-way video communication. When Notus is connected to the Wi-Fi (optional), it could be connected to ZKTeco's smart video intercom application ZSmart on the phone. It therefore supports remote unlock with password, and it could save images captured and video recordings on ZSmart and ZKBio Access.

Features

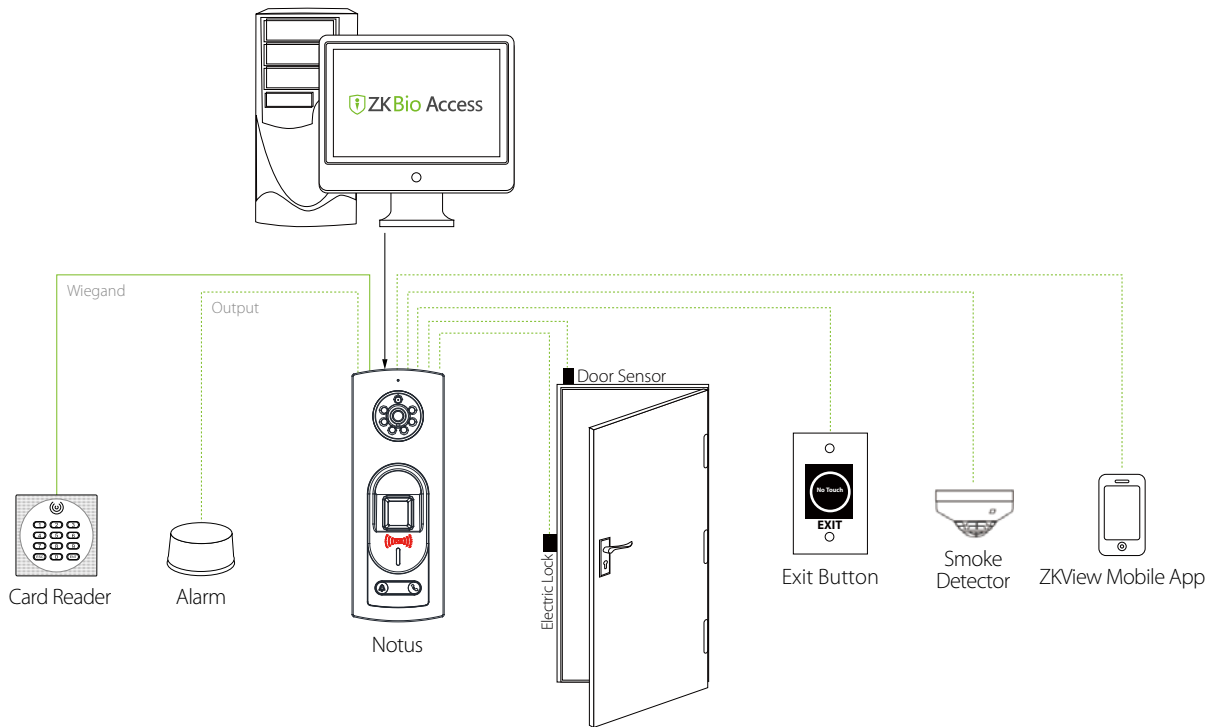
- Built-in microphone and speaker for two-way audio and one-way video communication with Mobile App
- Remote Unlock via Mobile App
- Web Server
- Supports different types of RFID cards: ID / IC / IC EV1 (Optional)
- A&C push protocol
- Communication via TCP/IP and Wi-Fi (Optional)
- Connection to control panel via RS-485 and Wiegand
- Protection level: IP65
- Brushed metal surface

Specifications

Camera	2MP/1080P, IR light
Fingerprint Capacity	10,000
Card Capacity (Optional)	50,000 (Optional)
Log Capacity	200,000
Communication	TCP/IP, Wi-Fi (Optional)
Access Control Interface	3rd-Party Electric Lock, Door Sensor, Exit Button, Alarm, Doorbell, Wiegand In /Out
Standard Function	ADMS, DST, Camera, 9-digit User ID, Access Levels, Groups, Holidays, Tamper Alarm, Record Query, Anti-passback, Web Server, External RS-485 Fingerprint / Card reader and Wiegand Reader
Card Frequency	ID / IC / IC EV1 (Optional)
Biometrics Algorithm	ZKFinger V10.0

Fingerprint RAR	≤0.0001%
Fingerprint FRR	≤0.01%
Protection Level	IP65
Power Supply	12V 3A
Operating Temperature	-40°C to 70°C (-40°F to 158°F)
Operating Humidity	20% - 80%
Dimensions (WxDxH)	80*34*219.5 (mm)
Supported Softwares/APP	ZKBioAccess / ZSmart

Configuration



Dimensions (mm)

