

RevFace15

Visible Light Facial Recognition Terminal
with Mask Detection



Proactive
Facial Recognition



New Height of
Anti-Spoofing



Speedy
Recognition



Wide Pose Angle
Acceptance



Masked Face



RFID



IP65

Compatible with

 ZKBio CVAccess



RevFace15 is a Visible Light Facial Recognition terminal with mask detection powered by the latest ZKTeco's customized CPU for running the intellectualized engineering facial recognition algorithm. It is designed to boost performance in all aspects and deal with all kinds of scenarios.

RevFace15 comes with a robust design that works well between -20°C (-4°F) and 45°C (113°F). It also meets the IP65 standard, enhancing environmental durability.

Features

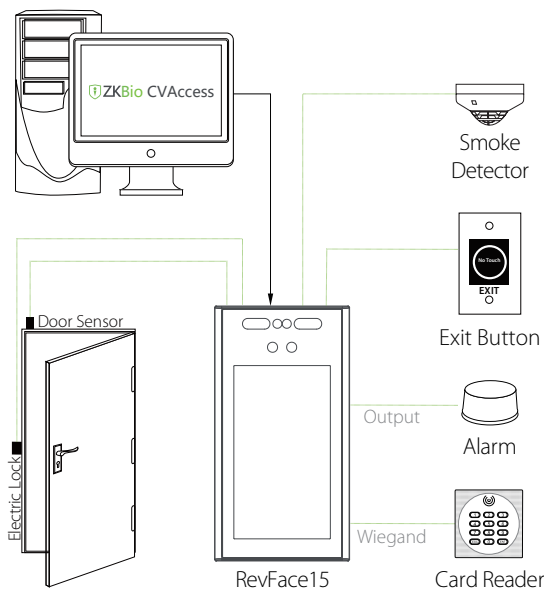
- 7-inch touch LCD screen
- Visible Light Facial Recognition
- Available card modules (Optional): 125kHz ID card (EM) / 13.56MHz IC card
- Anti-spoofing algorithm against print attack (laser, color and B/W photos), videos attack and 3D mask attack
- IP65 ingress protection rating
- Compatible with external RS485 and Wiegand reader
- Unrivaled facial recognition speed (less than 0.2 seconds per face)
- Optional exclusive feature: Facial recognition of multiple people at once (up to 4 people)

Specifications

Display	7-inch Touch Screen
User Capacity	10,000 (Optional: 20,000)
Card Capacity	10,000 (Optional: 20,000)
Face Capacity	10,000 (Optional: 20,000)
Transaction	200,000
Operation System	Linux
Standard Function	ADMS, T9 Input, DST, Camera, 9-digit User ID, Access Levels, Groups, Holidays, Mask Detection, Photo ID, Anti-passback, Record Query, Tamper Switch Alarm, Multiple Verification Methods
Hardware	Quad-core ARM Cortex-A7@ 1.2GHz, 1GB RAM / 8GB Flash, 2MP WDR Low Light Camera, Adjustable LED Light Brightness
Communication	TCP/IP, Wiegand Input / Output, Wi-Fi, RS485* / RS232*
Access Control Interface	3rd-Party Electric Lock, Door Sensor, Exit Button, Alarm output, Auxiliary Input
Optional Function	125kHz ID card (EM) / 13.56MHz IC card (MF)
Facial Recognition Speed	≤0.2s
Biometrics Algorithm	ZKFace V5.9
AC Adapter	DC 12V 3A
Working Humidity	0% to 90%
Working Temperature	-20°C to 45°C (-4°F to 113°F)
Dimensions (W*H*D)	119.9 * 226.6 * 27.7 (mm)
Protection Level	IP65
Supported Software	ZKBio CVAAccess

* Note: RS232 is for external printer and RS485 is for RS485 readers.

Configuration



Dimensions (mm)

